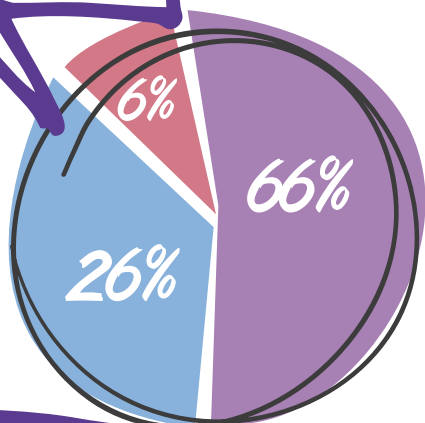
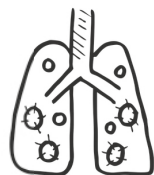


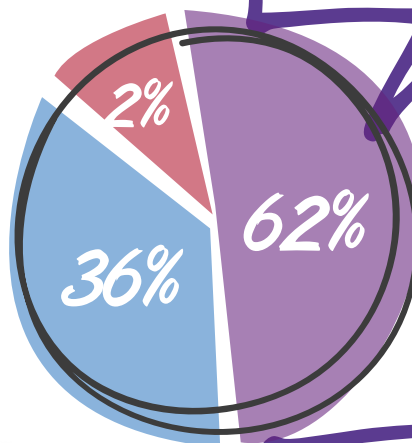
# In relazione al periodo settembre-dicembre:



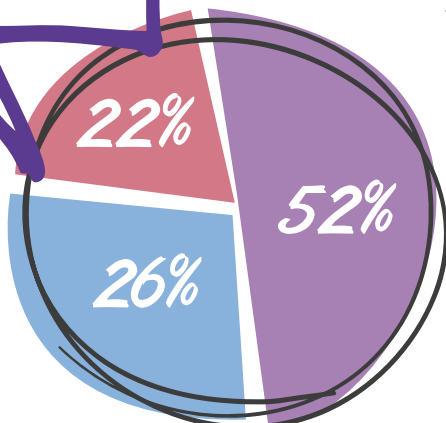
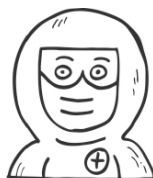
Quanto reputi probabile che ci sia un nuovo lockdown?



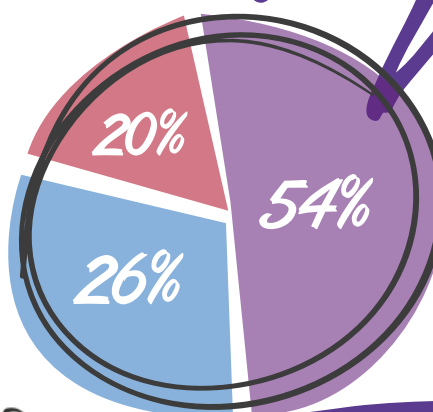
Quanto reputi probabile che ci siano chiusure scolastiche?



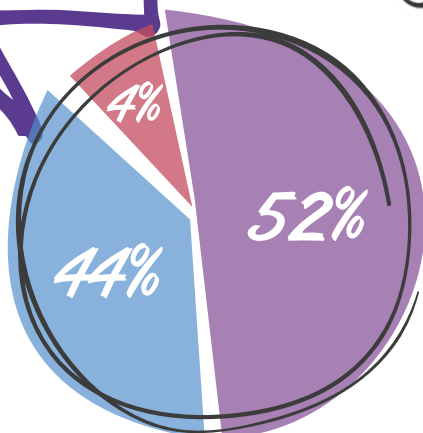
Quanto reputi probabile che tornino divieti/obblighi (es. distanziamento, mascherina)?



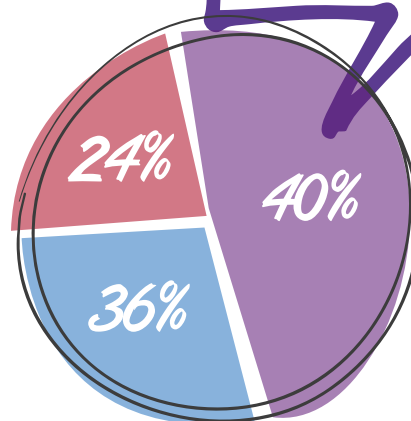
Quanto reputi probabile che venga effettuata una nuova campagna vaccinale?



Quanto cambierai le tue abitudini sociali rispetto all'ultimo biennio?



Quanto cambierai le tue abitudini sociali rispetto al pre-Covid?



● Poco probabile    ● Abbastanza probabile    ● Molto probabile